

Checkmate: Production Planning & Scheduling Made Easy

Develop complex production schedules in minutes, not weeks, with The Grain, powered by SAS®



Gut instincts are no match for today's complexity in manufacturing

Reliable, informed production planning capabilities have always played a central role in manufacturers' success. Production planners operate at the center of a highly sensitive, sprawling web of relationships and issues - resources, production methods, maintenance, inventory, orders, due dates, and more. Their ability to understand, manage, coordinate, and optimize all these different manufacturing inputs has a direct impact on business outcomes: When customers get the products they need, when they need them, that's the result of good production planning.

But production planning has never been more difficult than it is today. The complexity of planning was already rising before the massive global disruptions unleashed in manufacturing in recent years, which introduced even more interdependencies and potential pitfalls for manufacturers. Seasoned production planners who for years relied on a mix of spreadsheet-based data and instinct to make smart decisions simply aren't prepared for today's level of complexity. That's where The Grain's Checkmate, a production planning and scheduling solution powered by SAS, comes in.

Checkmate: Ready for unprecedented complexity

Checkmate is a modular toolkit for manufacturers who want to digitize and optimize their production planning and scheduling processes. It takes advantage of recent advances in analytics, data management, and IoT to create a detailed, constantly updated digital twin of the manufacturing process and its critical inputs, all in a central hub that is accessible by a wider range of planners and other stakeholders.

No more squinting at spreadsheets in search of patterns and signals - in Checkmate, all the data is presented in an intuitive interface with the ability to zoom in for greater detail, drag-and-drop for faster, dynamic scheduling, explore what-if scenarios, and more. Checkmate gives planners access to complex mathematics without the need for coding. And it's delivered by one of the world leaders in production planning expertise - The Grain.

With Checkmate, The Grain has combined its 3 decades' worth of shop-floor production planning and scheduling expertise with powerful SAS solutions, including: SAS Forecast Server, SAS/OR®, and SAS Analytics for IoT.

THE GRAIN

Business/financial benefits

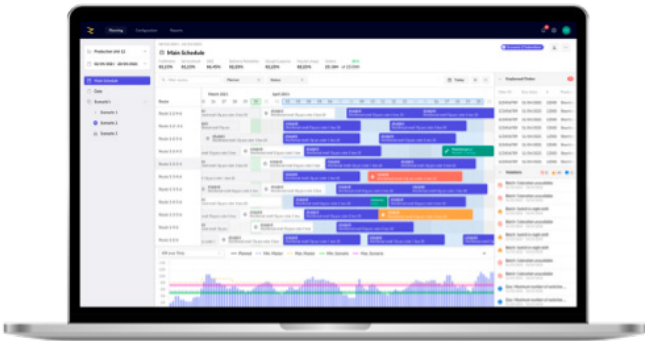
A standard delivery methodology helps transform and modernize the end-to-end process.

- Higher-capacity utilization
- Increased on-time delivery
- Reduced lead times
- Less production runtime
- Reduced labor costs

User benefits

Less effort required for planning.

- Improved knowledge retention and sharing
- More effective collaboration
- Faster decision making
- Reduced reliance on manual, error-prone processes
- Clearer, more actionable insights from simulations



Checkmate is a full-featured, analytics-driven solution built around the needs of planners



Let's talk!

Learn more about how SAS analytics are deployed by [The Grain](#), a widely recognized global leader in production planning. Contact Bobby.Shkolnikov@sas.com.



Intel Inside. Successful analytics initiatives require tight alignment between hardware and software in the hands of skilled technologists and strategists. That's why the ongoing collaboration between SAS and Intel is so important for clients. Together, we know how to connect all the dots on analytics strategies to deliver practical solutions that deliver real, measurable results - at any scale.



At SAS, we love bold questions. And when we combine our analytics leadership with the innovative technology and expertise of our partners, we help our customers turn data into answers. That's the kind of curiosity that moves the world forward. That's the **Power of the Partner**.