

SingleStore x SAS



What Is SingleStore?

Data in Real Time

MODERN APPLICATIONS

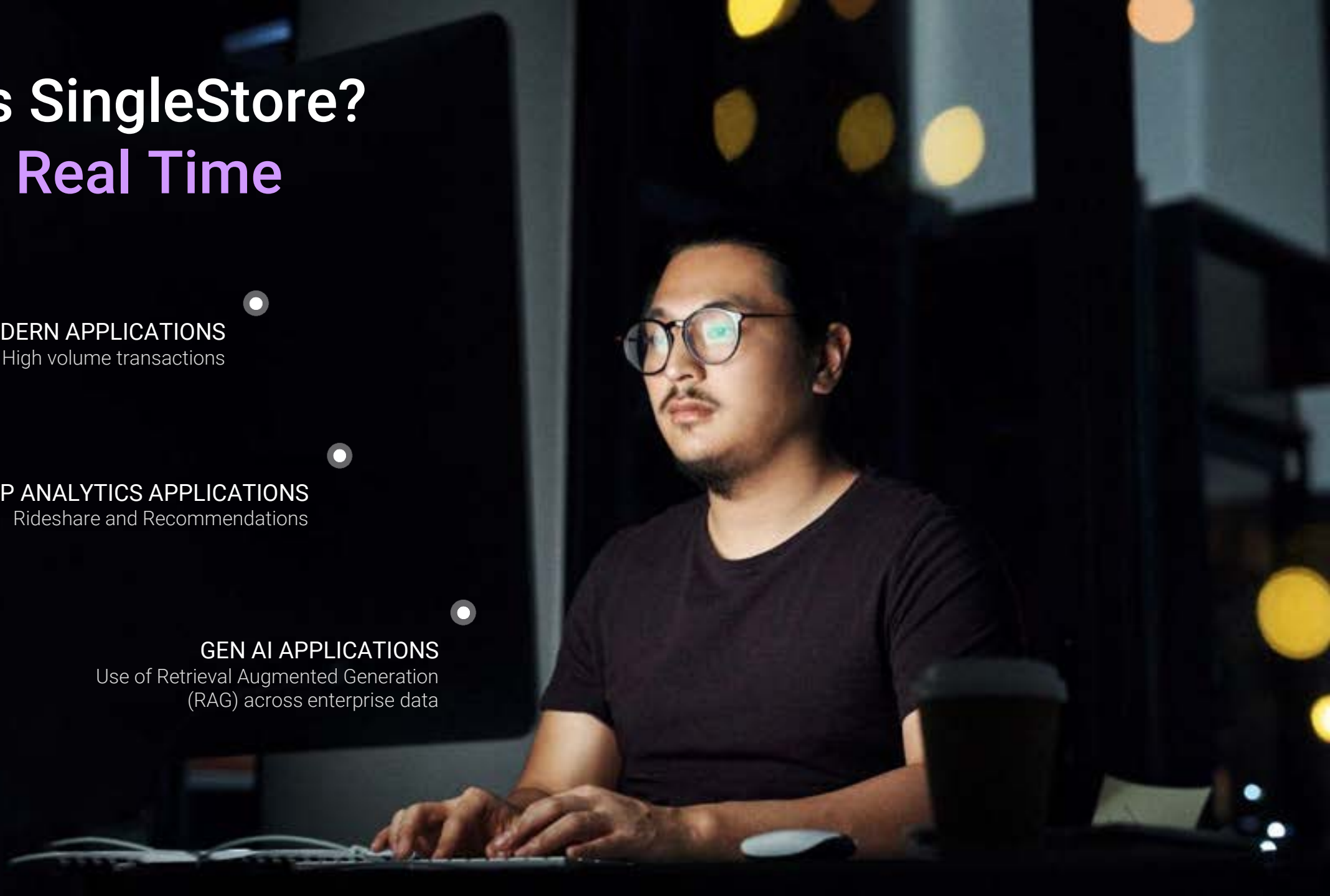
High volume transactions

IN-APP ANALYTICS APPLICATIONS

Rideshare and Recommendations

GEN AI APPLICATIONS

Use of Retrieval Augmented Generation (RAG) across enterprise data



Speed

100M+

records added to
SingleStore every
second, globally

Scale

100s

of petabytes stored
on SingleStore

Simplicity

4

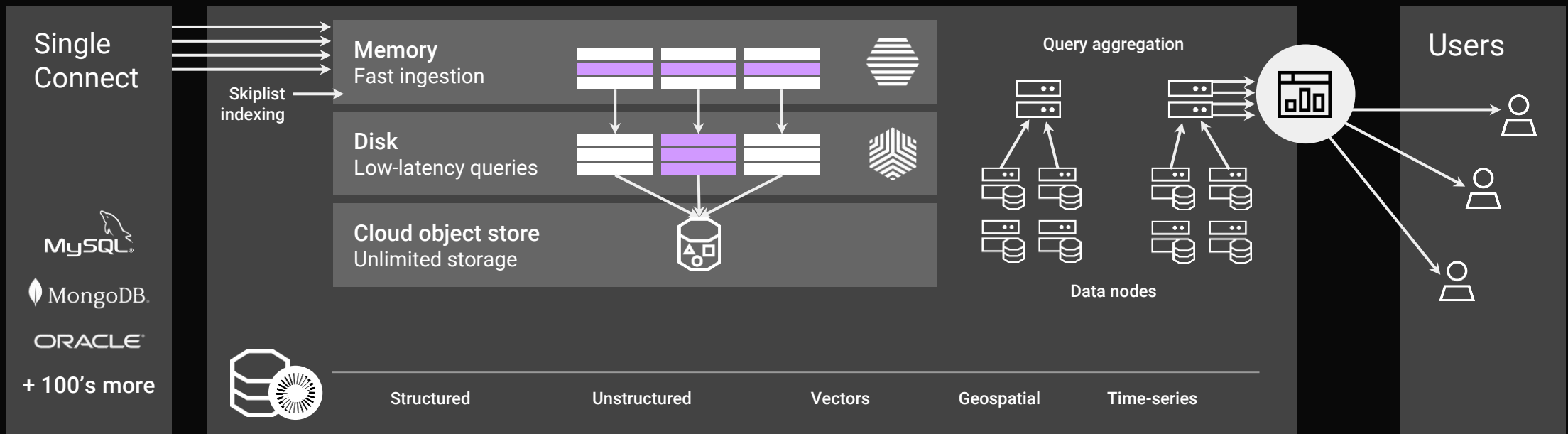
databases on average
consolidated in
organizations

Cost

50%

average
cost reduction

Why SingleStore Wins: Transactions. Analytics. Search.



Power of SingleStore Real-Time Database

Powerful multi-model database:
SQL + JSON + Vectors + full text

SingleStore replaced:

Apache Spark™ + Cassandra + Elastic + Druid + MongoDB®



SingleStore replaced:

MySQL® + Redis + Amazon DynamoDB

fathom
analytics/

SingleStore replaced:

Google Cloud SQL + MySQL + PostgreSQL

arcules

SingleStore replaced:

Apache Storm™ + Druid

hulu

SingleStore replaced:

PostgreSQL + Elastic



SAS x SingleStore: Better Together

Future of AI : Most complete AI platform for operational, multi-model, analytical, full vector/contextual search from training to real time



SingleStore embedded engine for SAS workloads to manage data, develop models and deploy insights



SingleStore as modernization, augmentation and migration play for 50% less TCO



Open data format: SAS data is now queryable from a modern framework that will easily integrate with applications and standard practices



Introducing SAS w/ SingleStore Gen AI Data Platform

SingleStore gen AI platform: Fully elastic compute

Notebooks, SQL editor and API, developer tools, foundation models, LLMs, GPU

SingleStore Core gen AI engine

SQL + JSON-based interface API-based interface Gen AI serverless (coming soon)

Petabyte scale hybrid vector index building and search
Adoptable vector algorithm and library + full text + JSON + SQL

Pluggable + Autotune vector index algorithm Full-text search powered by Apache Lucene JSON search + analytics (MongoDB®) Full SQL support Data sharing

Built on top of Core HTAP enterprise features
Three-tier architecture, multi-model support, RBAC, observability, Auto scale, HA, DR

Snowflake Augment

Transactions + Analytics Have Merged

Nov 2023



Nov 2024



Transactions + Analytics Have Merged

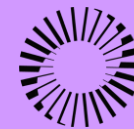
SingleStore

50PB largest cluster

1-15ms average query response
time

10 years developing engine and fine-
tuning for HTAP

45 NPS, 10% higher than B2B and
SaaS average



Snowflake Unistore

2+ years in development

0 customers in production

50% slower than HTAP market
leaders

\$\$\$ blaming difficulty of
development cost and running
product in line with commercial reality



SAS Data + Snowflake

Zero ETL for gen AI + data apps

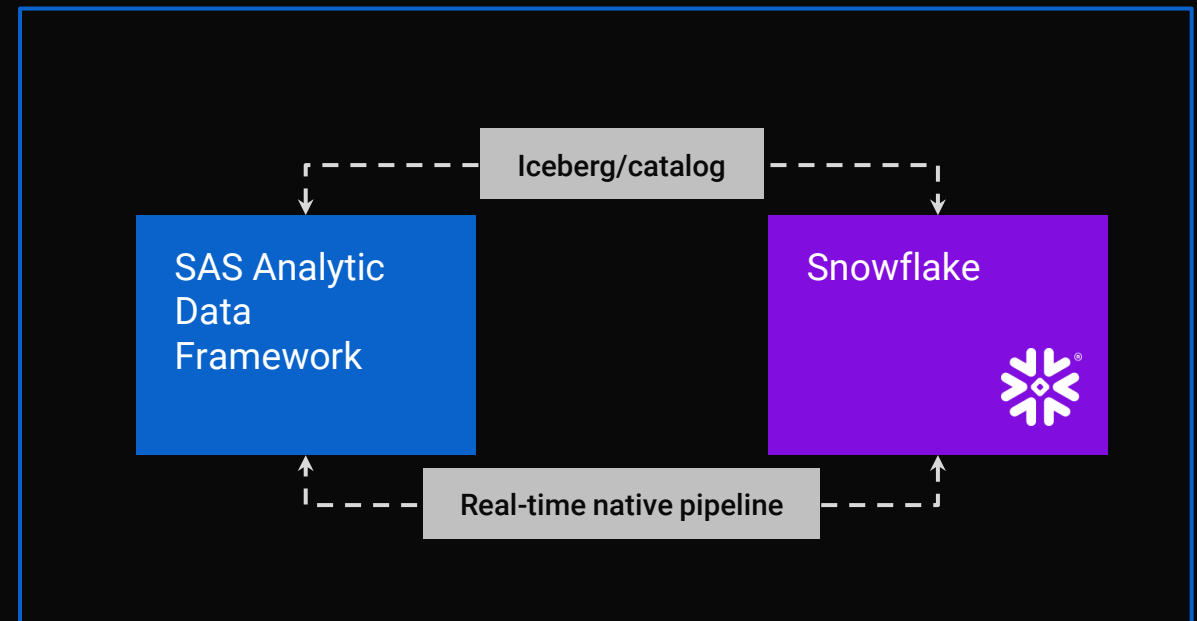
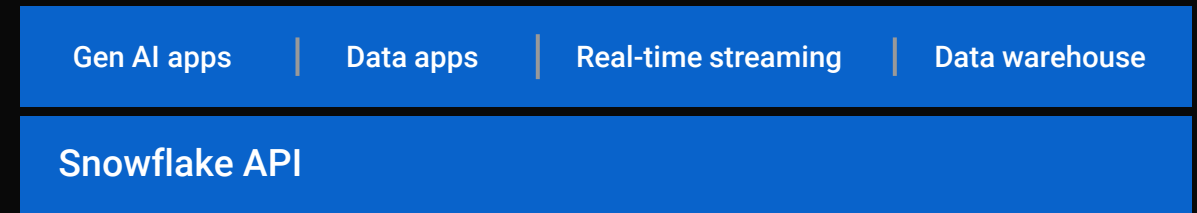
Scenario

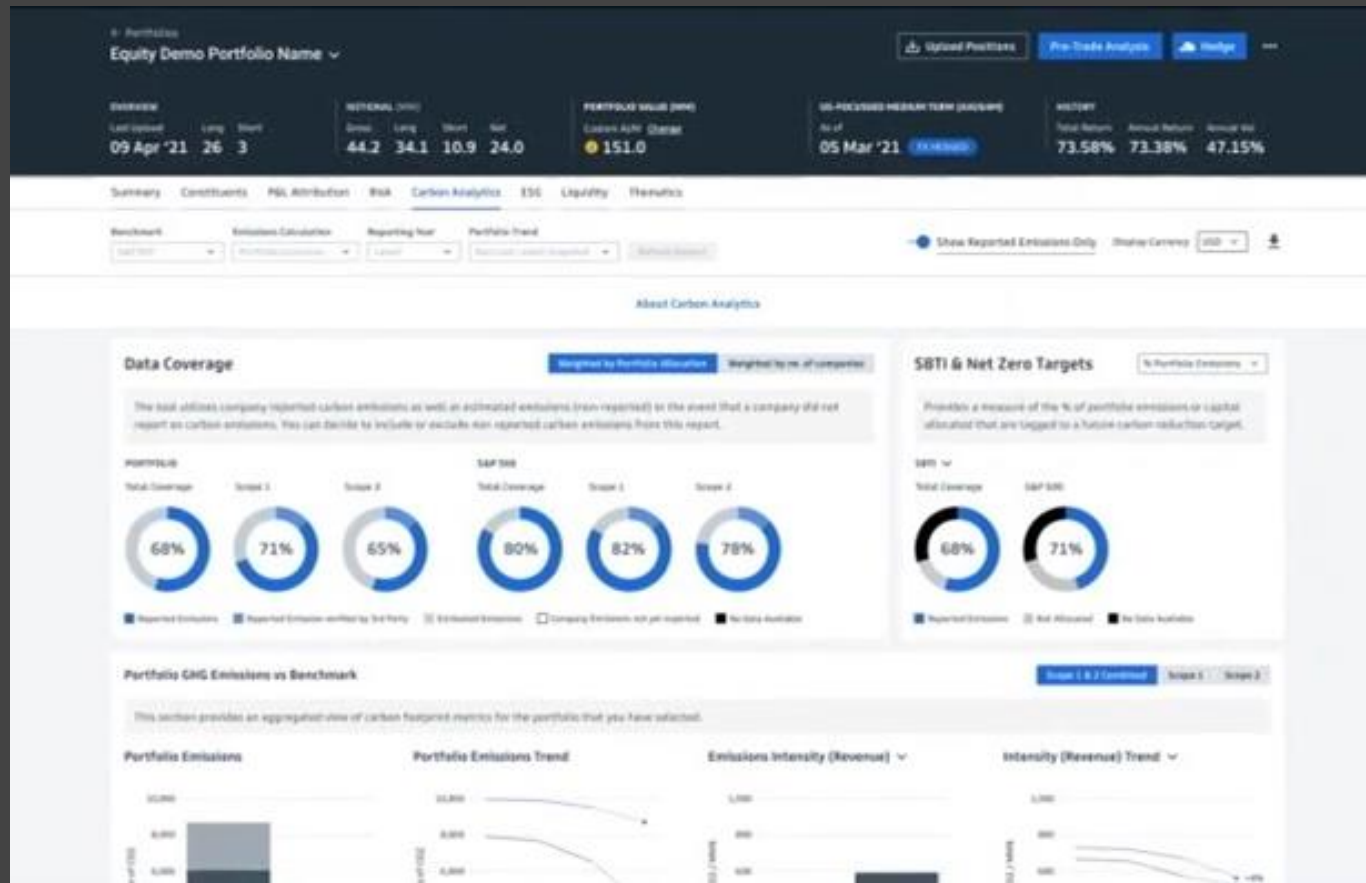
Customers want to scale apps built directly on Snowflake doing:

- SAS Analytics
- Transactions
- Real-time analytics

Requirements

- Access Engine will be too slow and move too much data
- Management of entire data lifecycle (real time + historical)
- Single API and endpoint for all apps
- Run securely in Snowflake Data Cloud
- Native real-time data integration with Zero ETL





40,000+

concurrent users with no contention

10-20ms

SLA for high net-worth customers

5x

deeper analysis with increased data exposure and vectors

/LiveRamp



10x

faster than Snowflake

75%

Reduction in TCO

179x

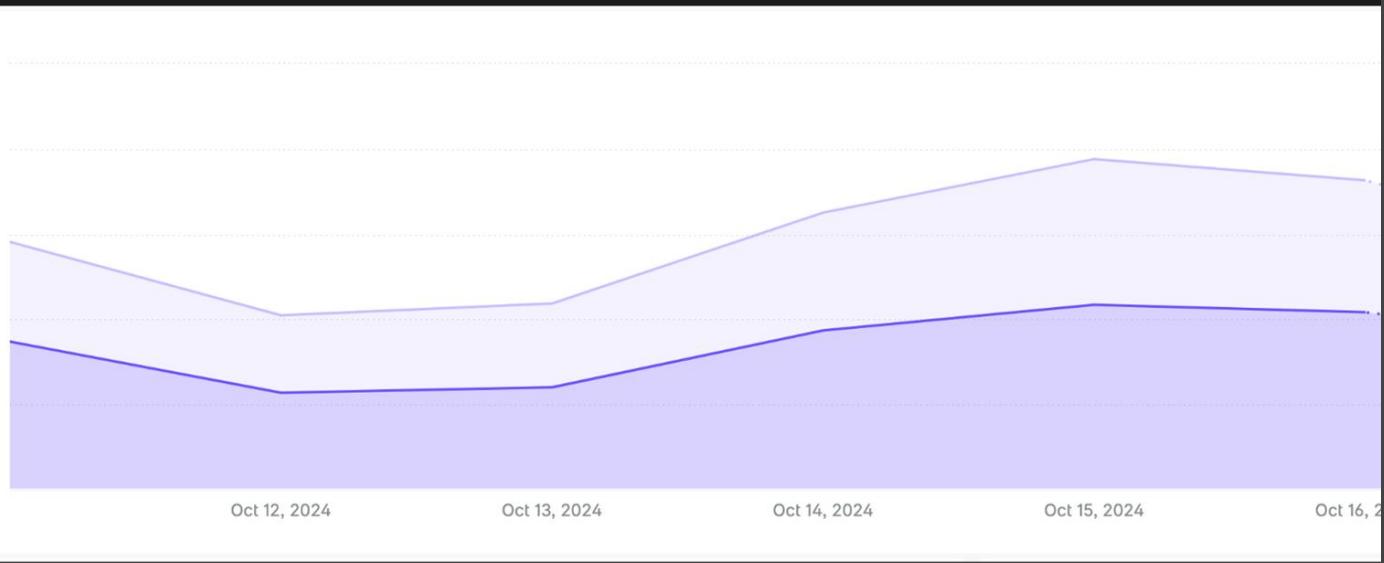
Faster data processing from 15 hours to less than 5 minutes

Small-to-Medium: Under \$100M

Hilarious Platypus

Oct 11 to Oct 17, 2024 compared to No comparison Auto

3	11.9k	20.7k	00:34	82%
Realtime	People	Views	Avg time on site	Bounce rate



12,000x

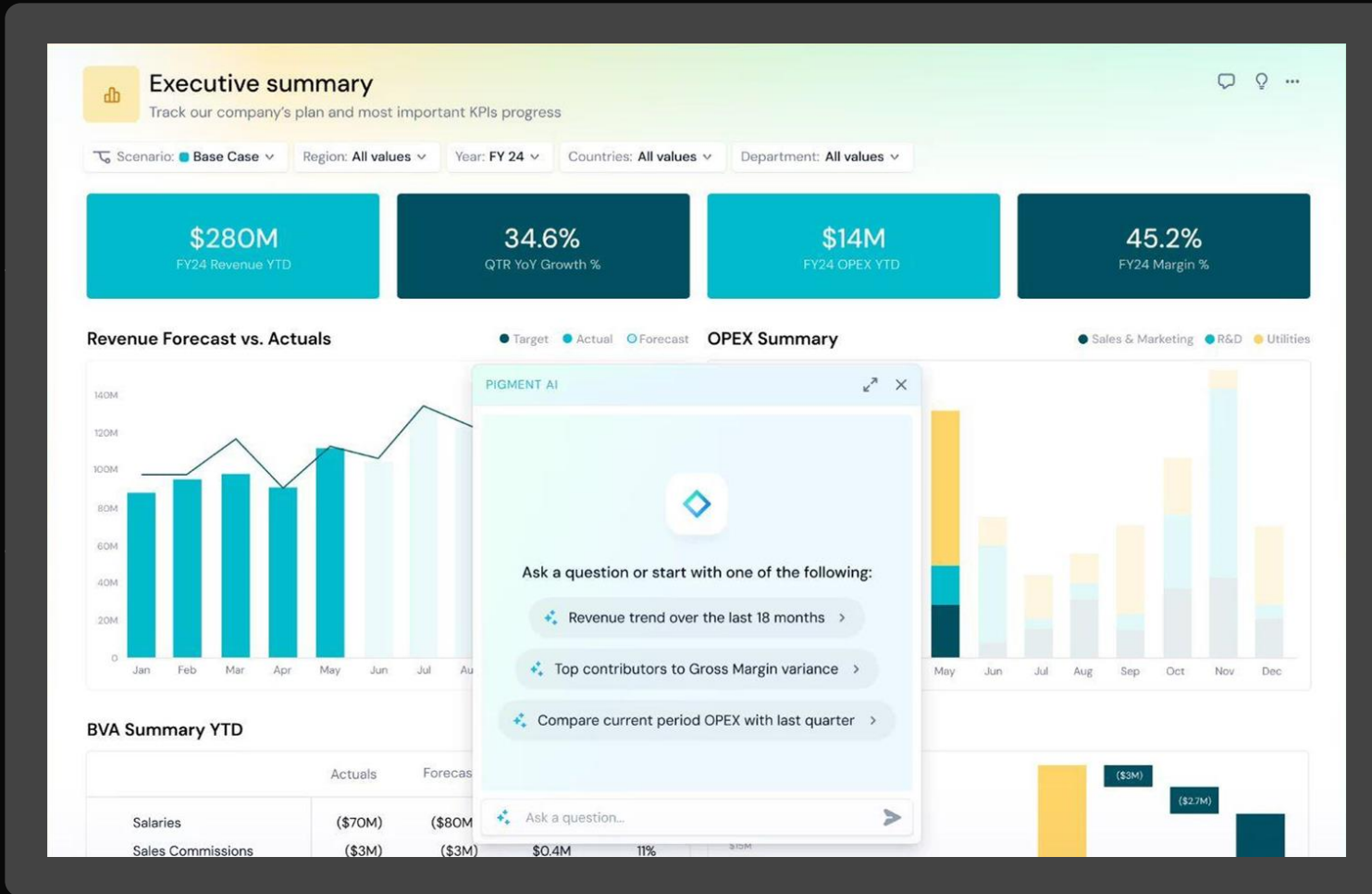
improvement in processing time

7+7

days to land and expand

60%

reduction in database TCO



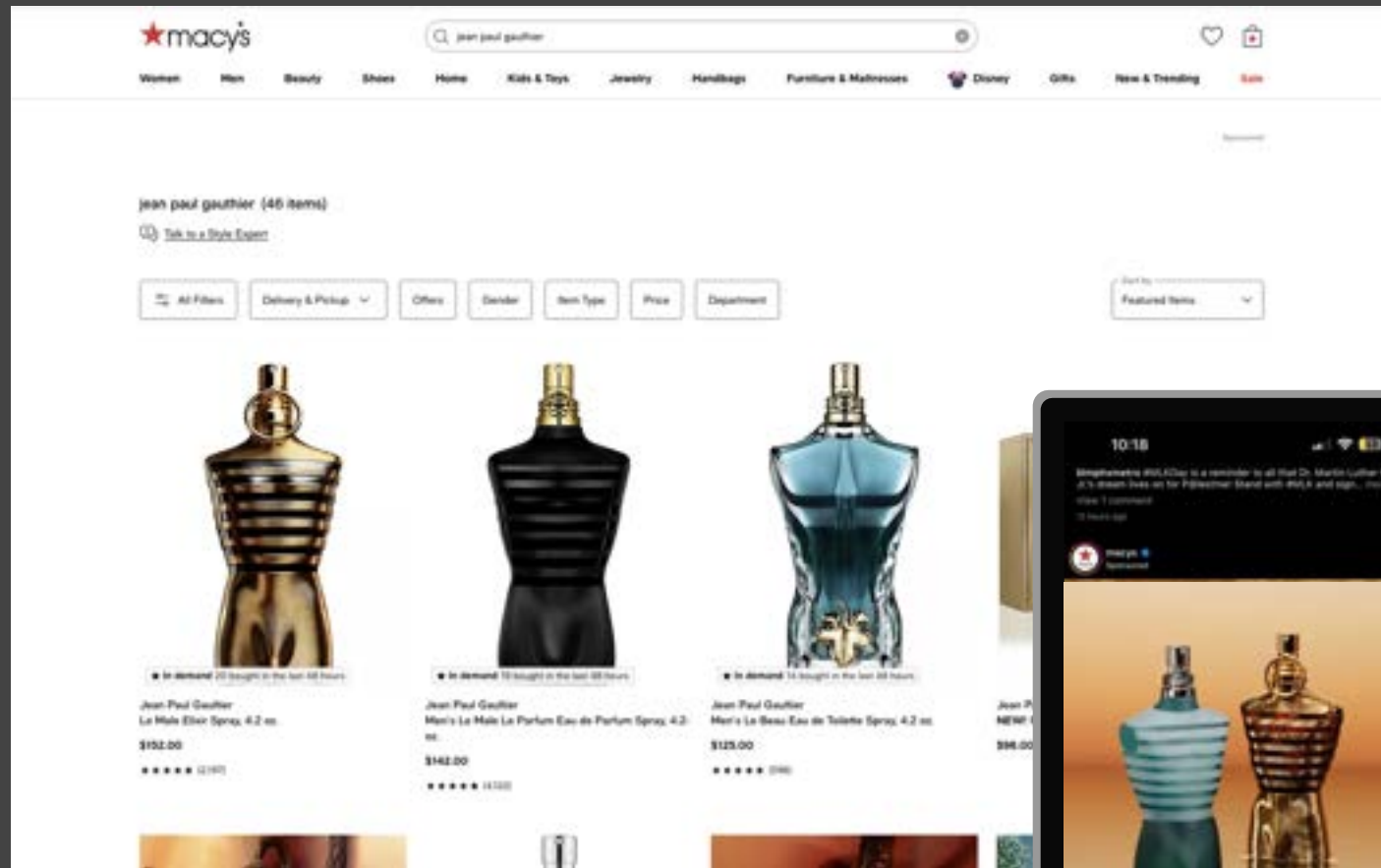
<100ms
query response

10M+
rows scanned

50+
multi-tenant customers

Enterprise: \$100M-\$1B

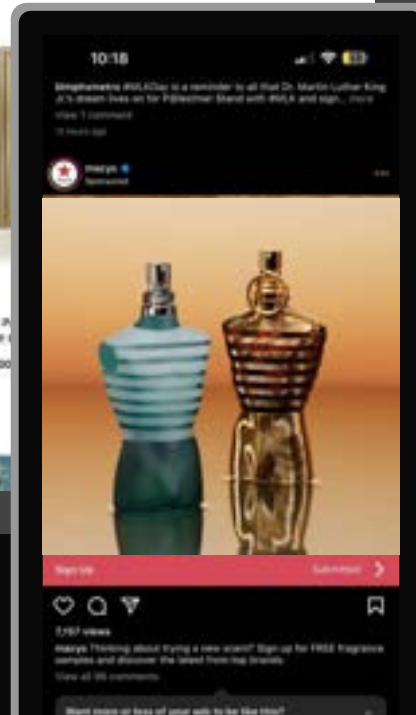
/LiveRamp

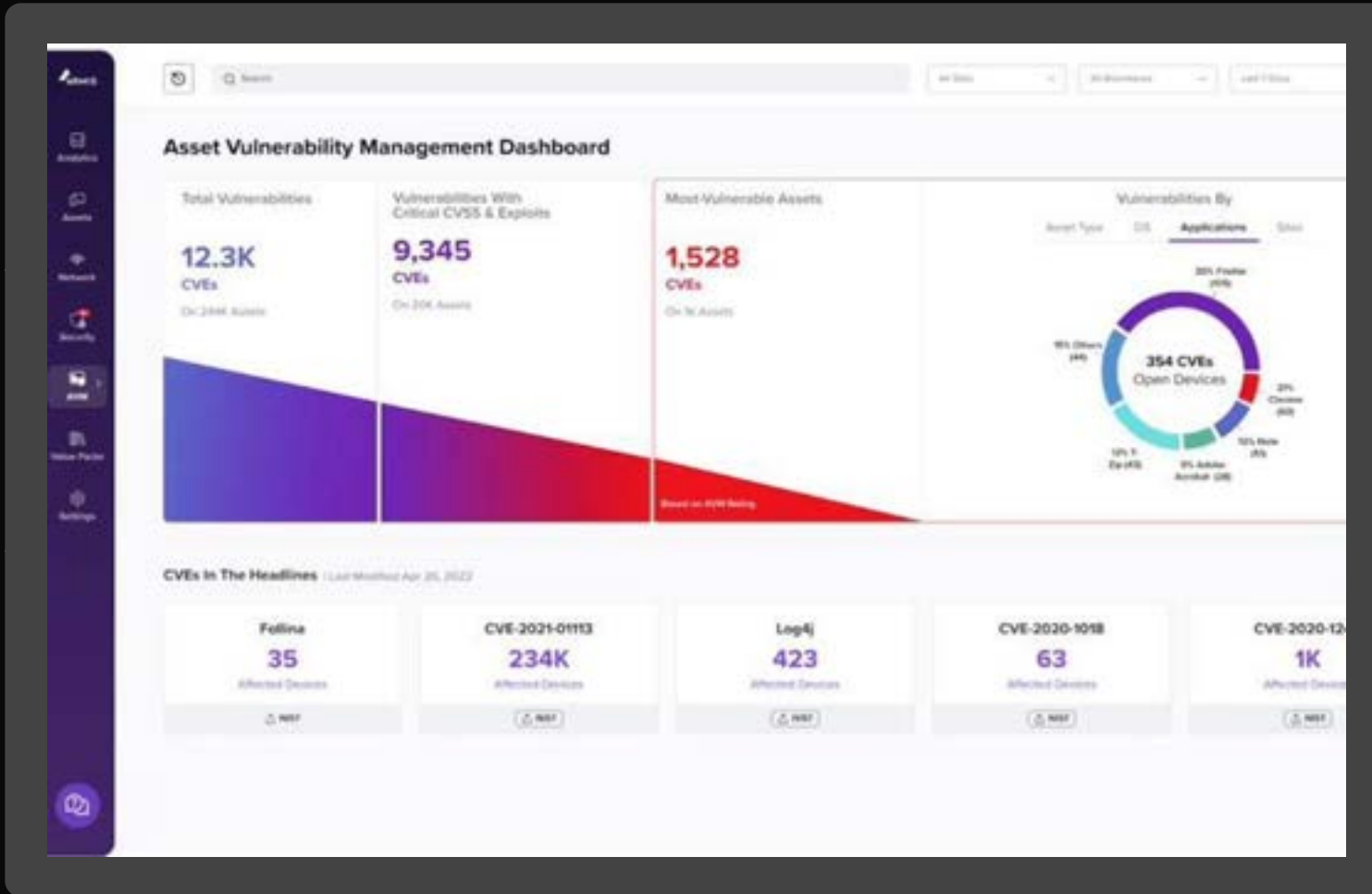


75%
reduction in TCO

\$5M
annual savings

179x
improved data
processing time



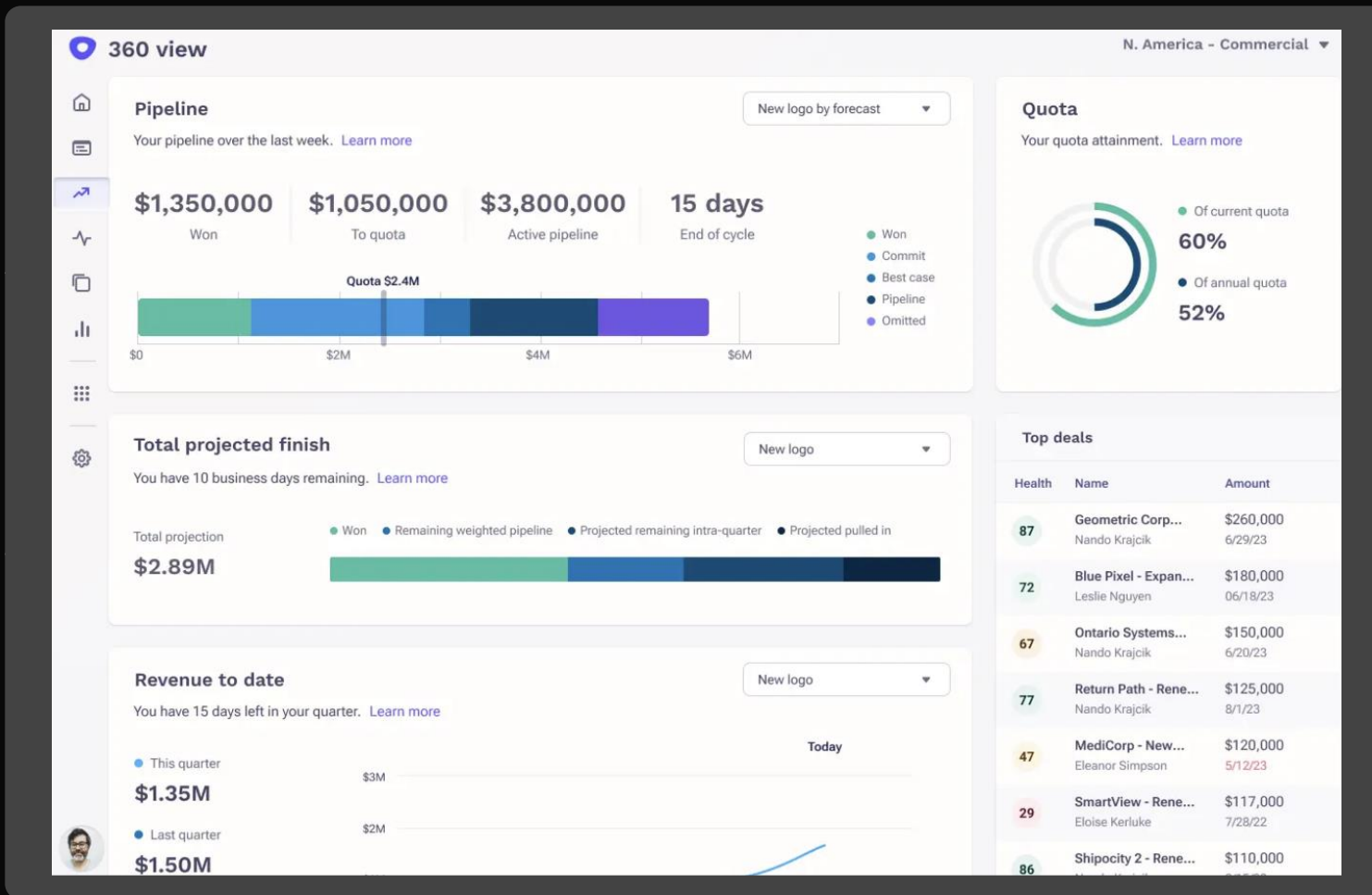


100 billion
events per day

30TB
data sets per customer

90%
cost reduction

Databricks Augment/Takeout



\$1.2M

annual cost savings

220%

faster query performance

40,000

concurrent queries



FOCUSED PORTFOLIO

170
Brands

16
Categories



Baby Fem Family Fabric Home Hair Skin & PC Grooming Oral PHC

25%

annual cost savings over Databricks

<1 min

From source to consumption.
Previously 24 hours

\$2m

Achieving \$2 million in cost savings
for every 15-minute delay eliminated



Thank You

Appendix: For Reference