

TASS - I

Posed Question and Solutions

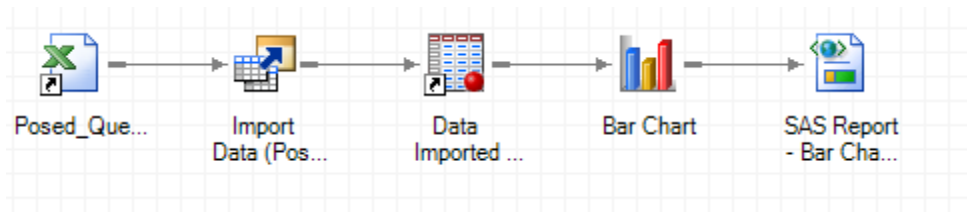
Solutions submitted by :

- Harsha Kotian
- Jinender Gulati
- Anita Measey

TASS - I

Posed Question Solution by Harsha Kotian

Quick Overview



- Imported the Excel data into SAS dataset using the Import data wizard in SAS EG
- Then, using the Bar Chart wizard in EG displayed results in required format

SAS EG Bar Chart Options

2 of 4 Assign variables to roles



Horizontal bar chart

Required

Bars: Application Status

Bar height: (Frequency)

Optional

Group by: Quarter

Depth: Client No

Stack by: Client No

Chart by: Product

Sample chart: (Frequency)

Quarter	Product 1	Product 2	Product 3
1	10	15	20
2	12	18	22
3	14	20	25

3 of 4 Specify appearance



3D chart

Colors

Color bars by: Bar category

Labels

Legend: South

Data labels: Percentage

Axis Labels

Lines and ticks

Use reference lines

Tick marks

Sample chart: (Frequency)

Quarter	Product 1	Product 2	Product 3
1	10	15	20
2	12	18	22
3	14	20	25

- The displayed selections on the Bar chart wizard generates the required results

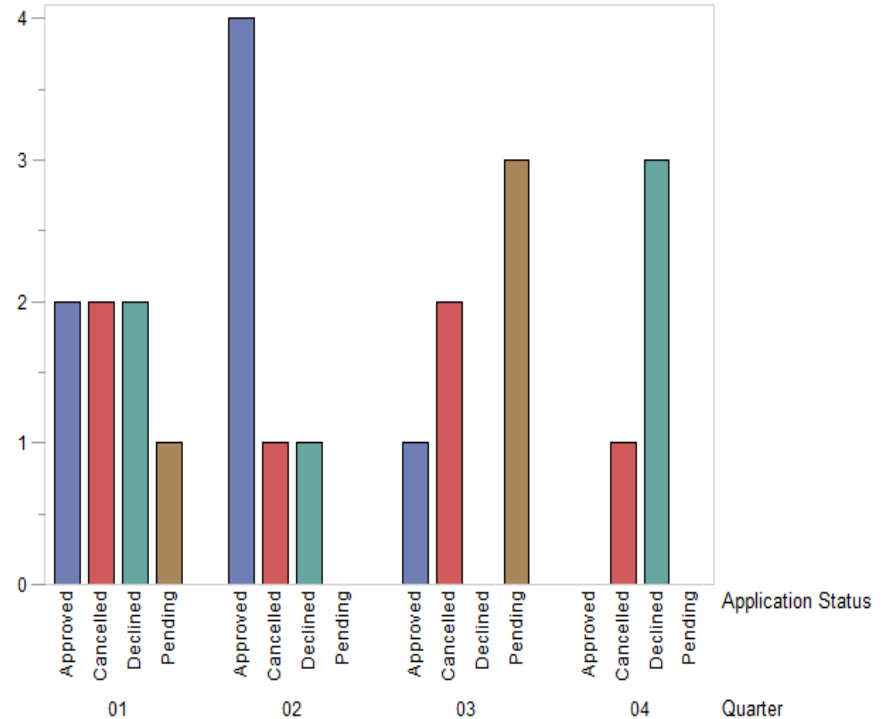
SAS EG Bar chart Results



Application Status by Quarter

Product=Home Loan

Applications



4 of 4 Provide a title and footnote

Graph: Application Status by Quarter

Reset

Footnote:

Reset

<Back

Next>

Finish ▾

Cancel

Help



TASS 1 – POSED PROBLEM CHALLENGE

Jinender Gulati
June 04, 2015

Step 1 : Use Bar Chart Wizard to create graphs

1. After importing the dataset into SAS Enterprise Guide,

Click on Graph > Bar Chart Wizard, to draw customized Bar Chart

2. After selecting the required dataset in the Wizard,

assign variables to different roles
Bars > Application Status ; Bar Height > Frequency of Client No. ; Group By > Quarter ; Chart By > Product

The screenshot shows the SAS Enterprise Guide interface with the 'Import Data (TASS_Posed_Question_Data_201506.xls[Sheet1])' window open. The main area displays a table with the following columns: Client No, Product, Quarter, Region, and a partially visible column for 'Approved' with values like \$112,069.15, \$46,664.64, and \$115,015.40.

Client No	Product	Quarter	Region	Approved	
1	Personal Loan	01	ONTARIO		
2	Home Loan	01	ONTARIO		
3	Personal Loan	02	ONTARIO		
4	Personal Loan	02	ONTARIO		
5	Personal Loan	03	ONTARIO		
6	Personal Loan	03	ONTARIO		
7	Personal Loan	04	ONTARIO		
8	Personal Loan	04	ONTARIO		
9	Personal Loan	01	ONTARIO		
10	Personal Loan	01	ONTARIO		
11	Personal Loan	02	ONTARIO		
12	Personal Loan	02	ONTARIO		
13	Personal Loan	03	ONTARIO		
14	Personal Loan	03	ONTARIO		
15	Personal Loan	04	ONTARIO		
16	Personal Loan	04	ONTARIO		
17	Home Loan	01	ONTARIO		
18	Home Loan	01	ONTARIO		
19	Home Loan	02	ONTARIO		
20	Home Loan	02	ONTARIO		
21	Home Loan	03	ONTARIO		
22	Home Loan	03	ONTARIO		
23	Home Loan	04	ONTARIO		
24	Home Loan	04	ONTARIO		
25	Home Loan	01	ONTARIO		
26	Home Loan	01	ONTARIO		
27	Home Loan	02	ONTARIO	Approved	\$112,069.15
28	Home Loan	02	ONTARIO	Approved	\$46,664.64
29	Home Loan	03	ONTARIO	Pending	\$115,015.40

The screenshot shows the 'Bar Chart for Local:WORK:TASS_POSED_QUESTION_DATA_2015061' dialog box. The 'Assign variables to roles' section is active, showing the following assignments:

- Required: Bars: Application Status; Bar height: (Frequency)
- Optional: Group by: Quarter; Depth: Client No; Stack by: Client No; Chart by: Product

A preview chart on the right shows a grouped bar chart with three groups labeled 'A', 'B', and 'Quarter', each containing three bars representing 'Application Status'.

Step 1 : Use Bar Chart Wizard to create graphs

3. Specify the appearance of the Bar Charts

Select 3D Chart check Box ; Color Bars By > Bar Category
Select Axis Labels: Bars > Application Status ; Bar Height
> # of Applications ; Group By > Quarter

4. Provide a title and footnotes to the Bar Chart

Graph > Application Status by Quarter
Footnote > Delete the default footnote to keep it blank

SAS Enterprise Guide

Project Tree: TASS_Posed_Question_Data_201506.xls, Import Data (TASS_Posed_Question_Data_201506.xls), Data Imported from TASS_Posed_Question_Data_201506.xls, Bar Chart

3 of 4 Specify appearance

3D chart:

Color bars by: Bar category

Legend: South

Data labels: Percentage

Axis Labels dialog:

Bars: Application Status

Bar height: # of Applications

Group by: Quarter

Depth: Client No

Stack by: Client No

Sample chart: (Frequency)

Application Status	Group	Frequency
1	A	10
2	A	15
3	A	20
1	B	15
2	B	20
3	B	10

SAS Enterprise Guide

Project Tree: TASS_Posed_Question_Data_201506.xls, Import Data (TASS_Posed_Question_Data_201506.xls), Data Imported from TASS_Posed_Question_Data_201506.xls, Bar Chart

4 of 4 Provide a title and footnote

Graph: Application Status by Quarter

Footnote:

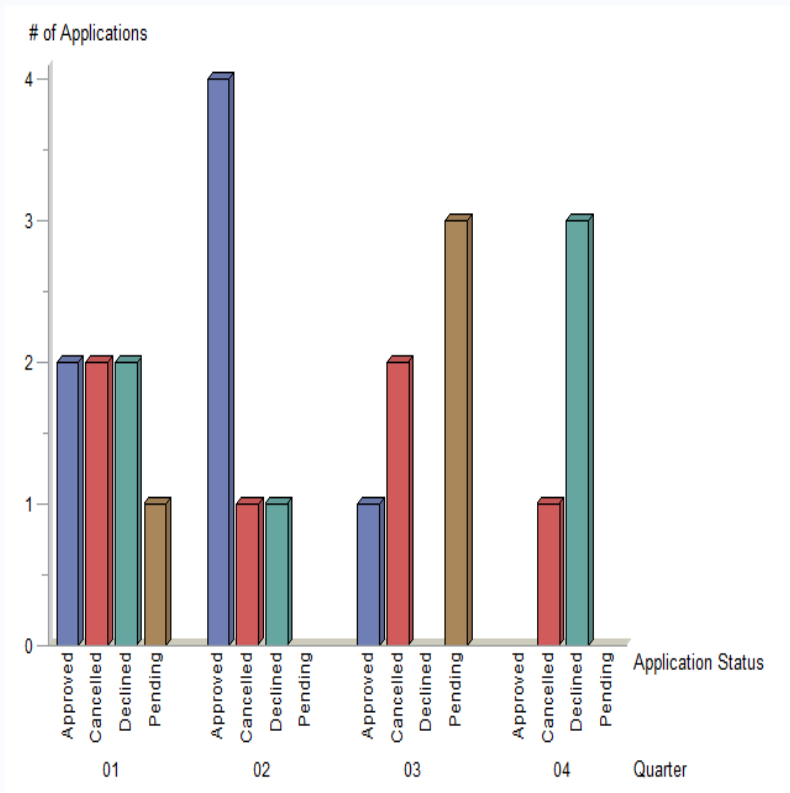
Step 2 : Output – Displaying the Bar Charts

Click on Finish Bar Chart Wizard to generate the output.

2 Bar Charts are created product-wise in the Results window of SAS Enterprise Guide

Application Status by Quarter

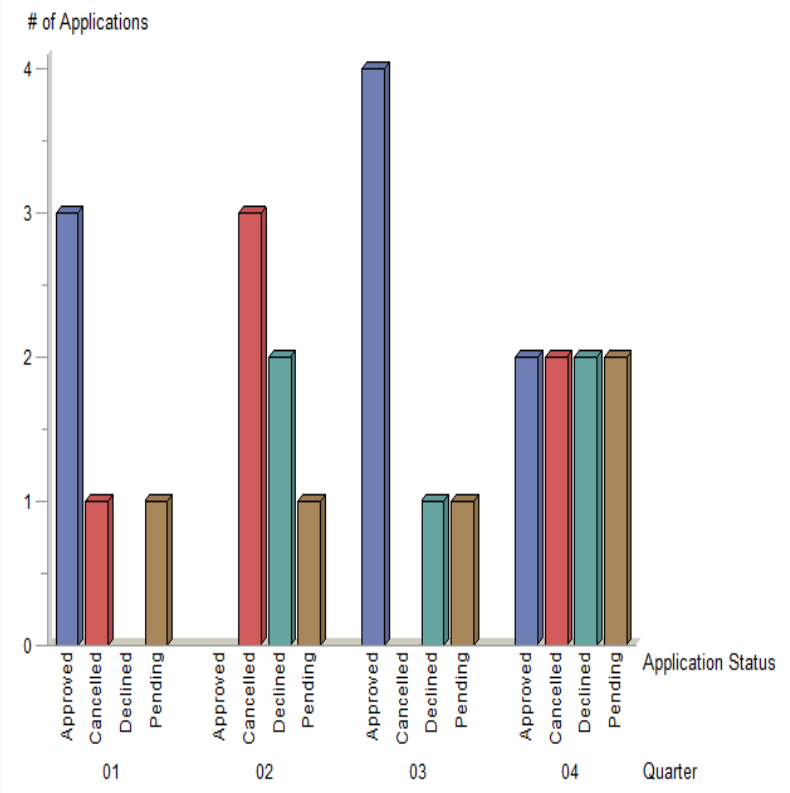
Product=Home Loan



Page Break

Application Status by Quarter

Product=Personal Loan

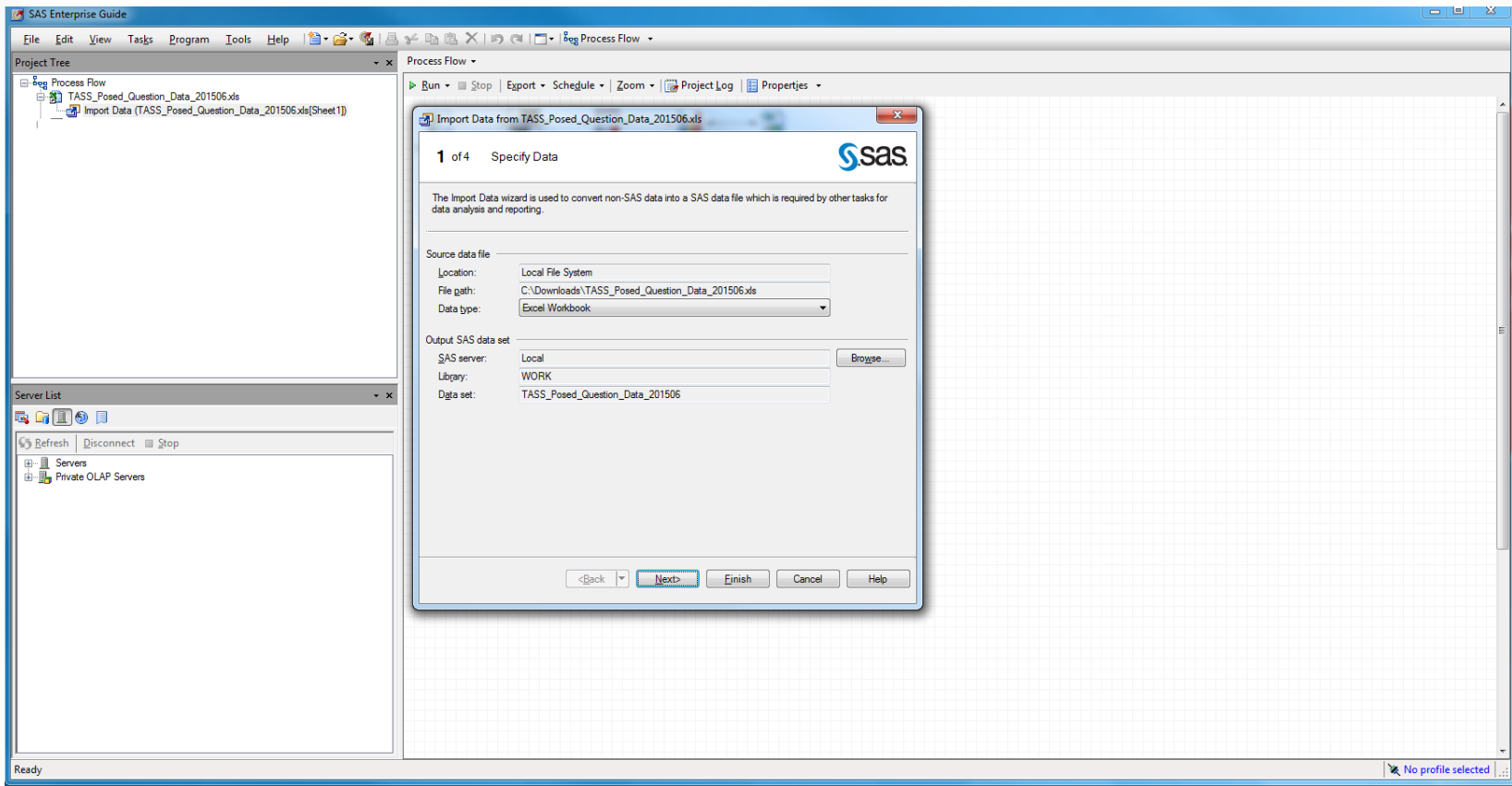


Page Break

TASS - I

Posed Question Solution by Anita Measey

1. Import data



2. Select Graph, Bar chart Wizard, follow instructions

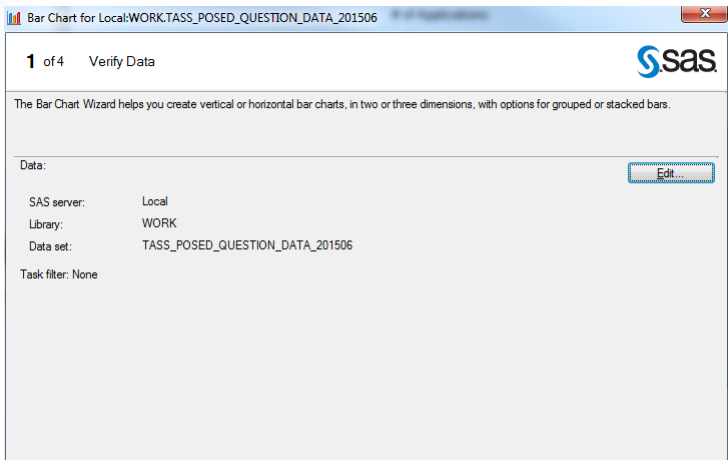
Bar Chart for Local:WORK.TASS_POSED_QUESTION_DATA_201506

1 of 4 Verify Data

The Bar Chart Wizard helps you create vertical or horizontal bar charts, in two or three dimensions, with options for grouped or stacked bars.

Data:

SAS server: Local
Library: WORK
Data set: TASS_POSED_QUESTION_DATA_201506
Task filter: None



Bar Chart for Local:WORK.TASS_POSED_QUESTION_DATA_201506

2 of 4 Assign variables to roles

Horizontal bar chart

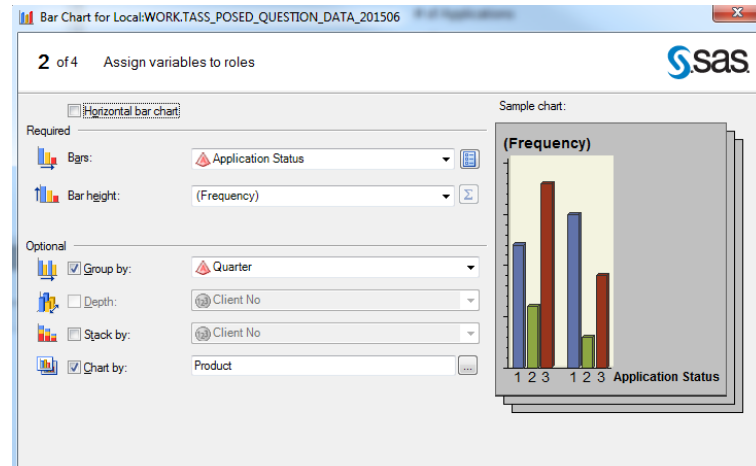
Required

Bars: Application Status
Bar height: (Frequency)

Optional

Group by: Quarter
 Depth: Client No
 Stack by: Client No
 Chart by: Product

Sample chart:



Bar Chart for Local:WORK.TASS_POSED_QUESTION_DATA_201506

3 of 4 Specify appearance

3D chart

Colors

Color bars by: Bar category

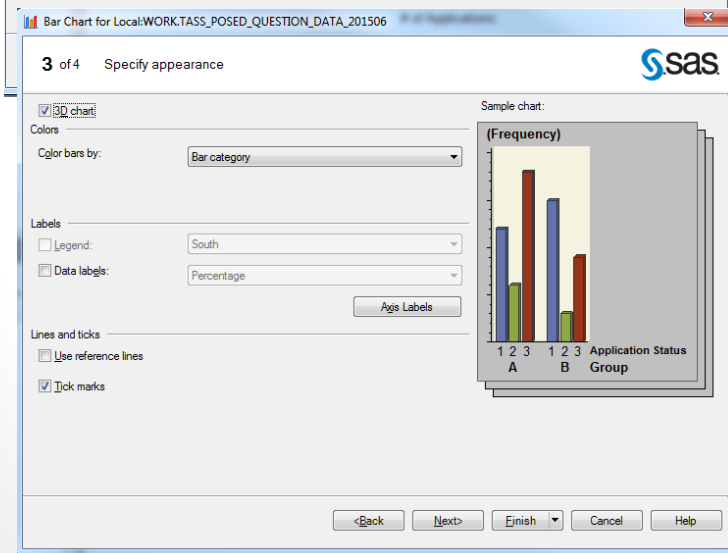
Labels

Legend: South
 Data labels: Percentage
Axis Labels

Lines and ticks

Use reference lines
 Tick marks

Sample chart:

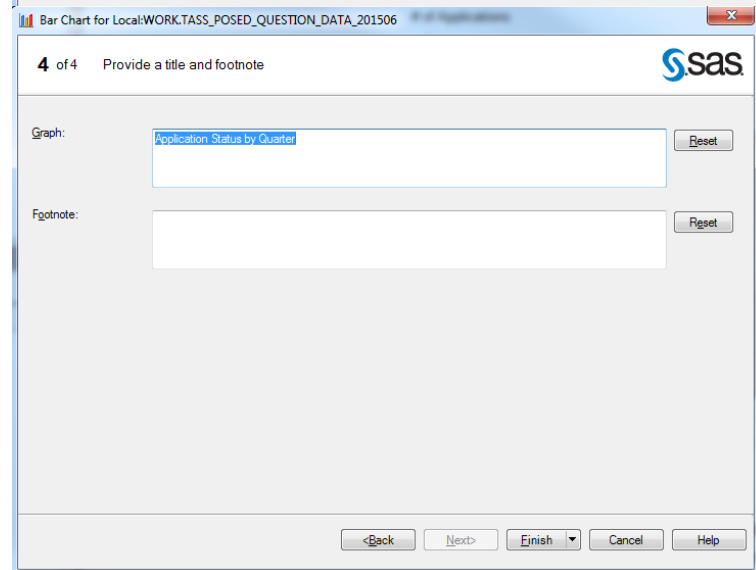


Bar Chart for Local:WORK.TASS_POSED_QUESTION_DATA_201506

4 of 4 Provide a title and footnote

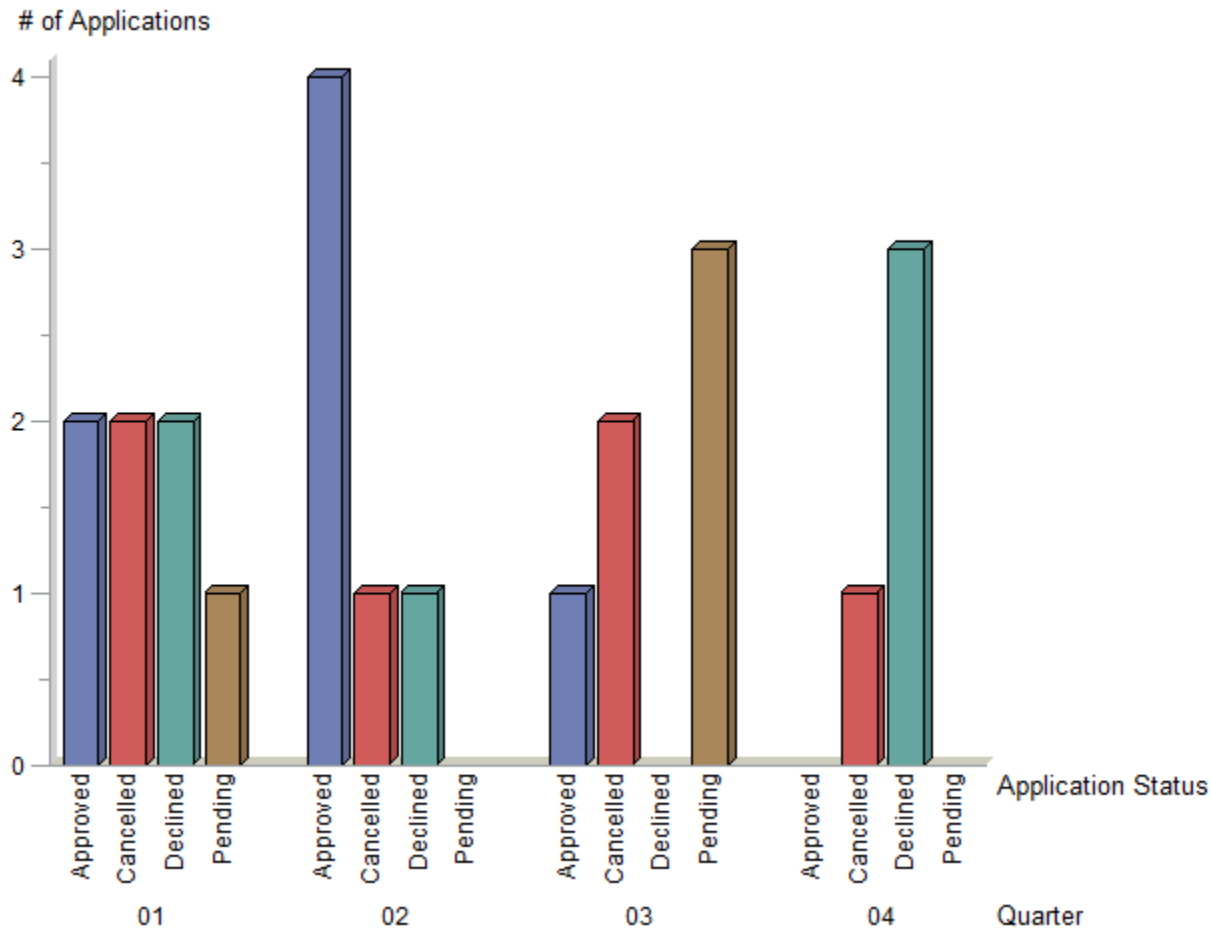
Graph: Application Status by Quarter

Footnote:



Application Status by Quarter

Product=Home Loan



Application Status by Quarter

Product=Personal Loan

